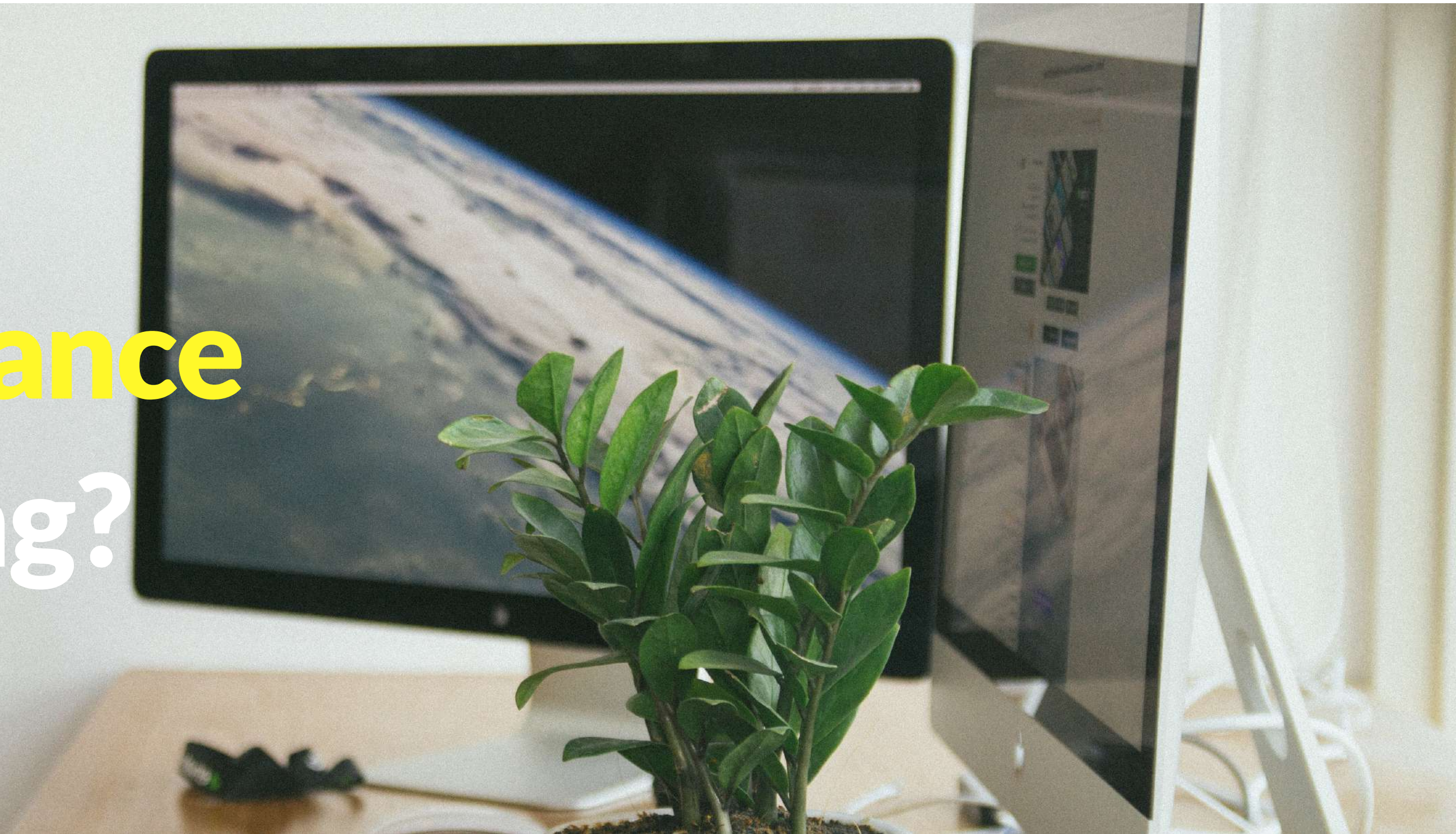


# REBIS

what  
level of  
**performance**  
are you  
expecting?

**SAP BO Support**  
by [rebisconsulting.com](http://rebisconsulting.com)





# WHAT CHALLENGES ARE WE SOLVING?

## *SAP BO Active Monitoring & Support*

Independent third-party active monitoring and support for all versions of SAP Business Objects from XIR2 to BI 4.2, SAP Analytics Cloud, Information Steward & SAP BO Data Services.

From troubleshooting to upgrades, migrations, and pro-active monitoring 24/7 if needed - worldwide.

## THE SAP BO SUPPORT CHALLENGE

### ISSUES

Immediate response to any specific and technical issue and daily challenges.

### UPTODATE

Up-to-date services with highly skilled and certified professionals.

### VALUE

Proactive monitoring helps your organization and teams leverage their performance.

# >5,000

*workhours spent on worldwide  
active monitoring and support services  
in multiple high profile projects.*

## WHAT WE DO

*"People and Technology at its best."*

- Remote Centre of Control and Monitoring
- SAP SUPPORT Interface including ticket creation and management
- Remote sessions and Conference calls
- Ticket Management with your CCM Tool or our all-inclusive solution
- Single point of contact and notifications sent to the SPOC

SPOC



TICKETING SYSTEM  
CLIENT - REBIS

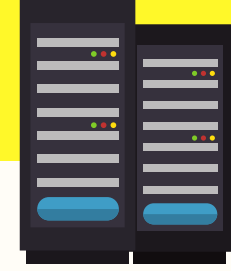
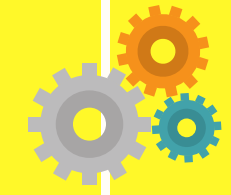


24hr



- GLOBAL DASHBOARD
- CLIENT / TAILOR-MADE DASHBOARD
- ENVIRONMENT DASHBOARD
- TICKETING DASHBOARD

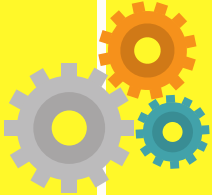
CCM | CENTRE OF CONTROL & MONITORING



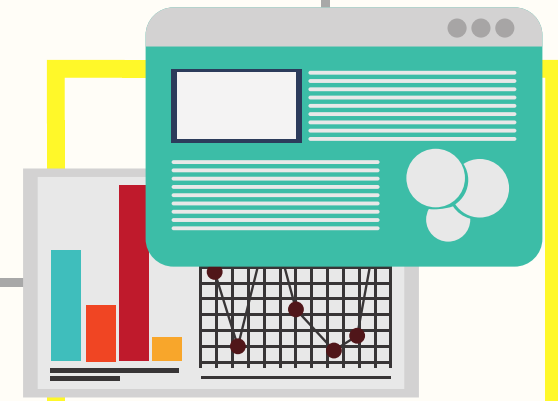
SMTP



HTTP



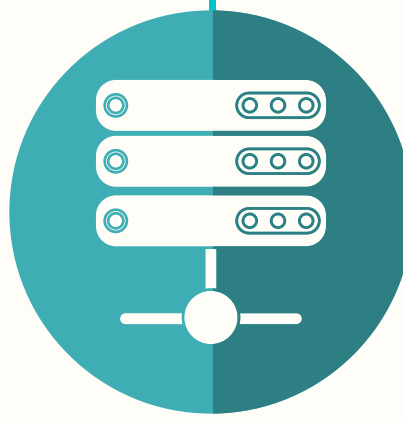
DATA  
REPOSITORY



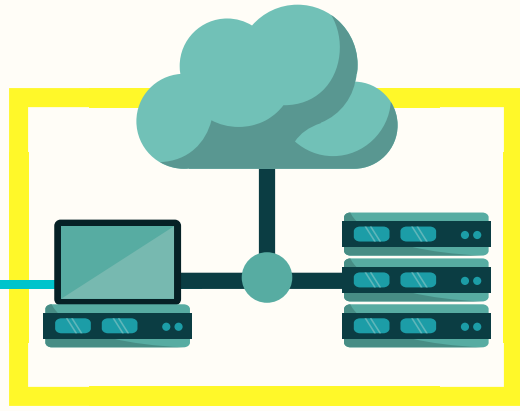
UNIVERSE



REPORTS



ETL



DATA MART

# HOW WE WORK

## OUR MULTIPLE SOLUTIONS INCLUDE

### SAVINGS

Time, money and resources with tailor-made software and applications for you.

### FREE

Software upgrades, training sessions and one-on-one SAP BO coaching.

### CARE

We nurture your system and your technical skills 24/7 remotely if you need it.

**AND MORE**

Our environment was difficult to manage due to a very complex security landscape. We needed to simplify to save time and troubles. REBIS came in with a very systematic and well thought security matrix allowing us to systematize our security landscape in a very short space of time. We solved what we needed!

*Chief Data Officer  
Banking*

**AND MORE**

**WHAT OUR  
CLIENTS  
SAY?**

*"People and Technology at its best."*

BUILD YOUR SERVICING SOLUTION WITH

# SENIOR **SAP BO** & **TECH** ADVISE



JORGE  
SOUSA



NUNO  
FERREIRA



DAVID  
PÉREZ



RICARDO  
PEDROSA



FERNANDO  
GIRANTE



ANDRÉ  
MAGALHÃES



EXPERIENCED PROFESSIONALS YOU CAN  
TRACK THROUGH LINKEDIN PROFILES



# Let's make this happen.

**CONTACT US**

**We look forward to work with you  
addressing your active monitoring and support challenges.**  
[sapbosupport.rebisconsulting.com](https://sapbosupport.rebisconsulting.com)